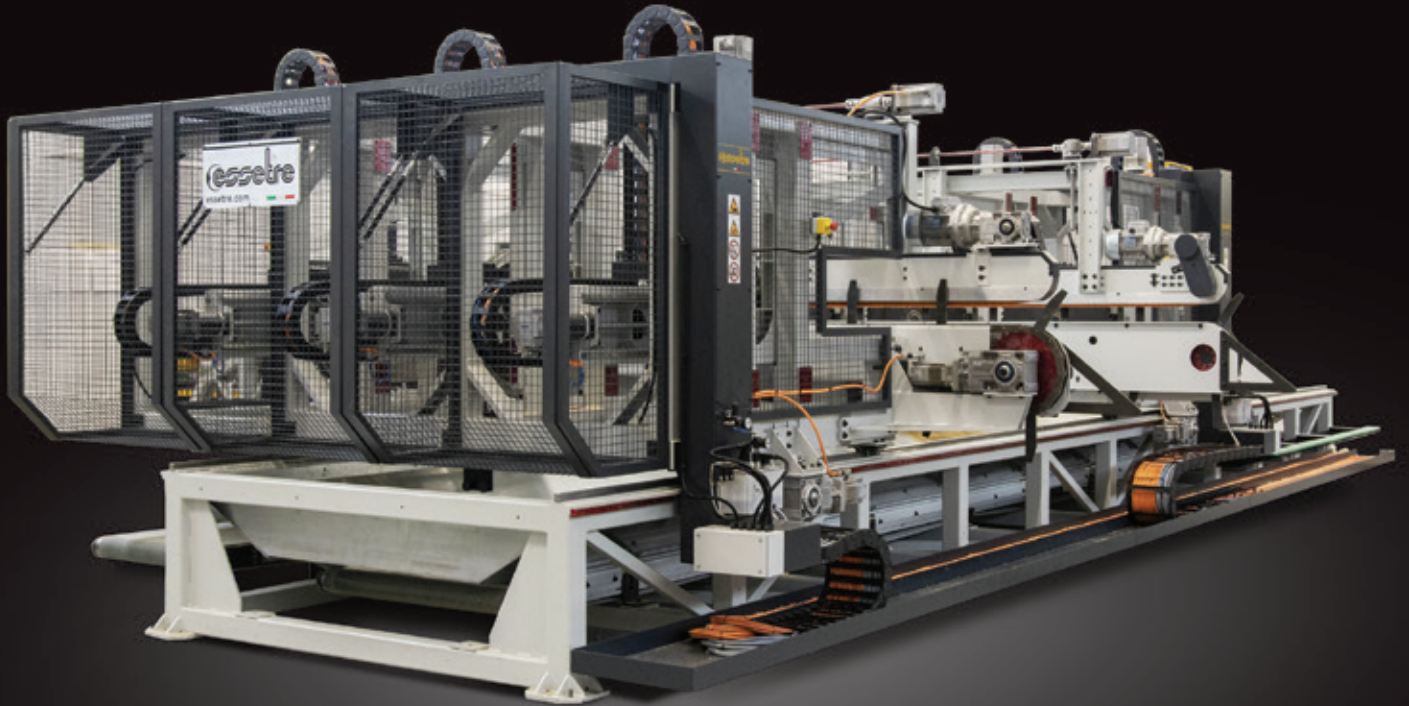


***   NORTH AMERICA LLC

Essetre[®]

WOODWORKING TECHNOLOGY EVOLUTION



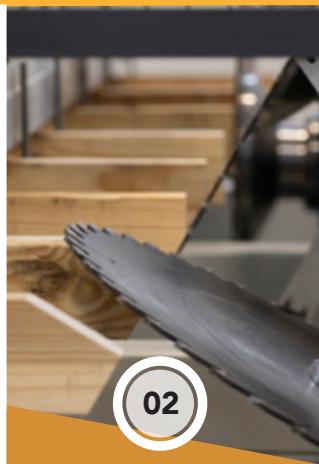
TCS Series Multi-Blade Component Saw for Roof Truss Web Processing

TCS Series

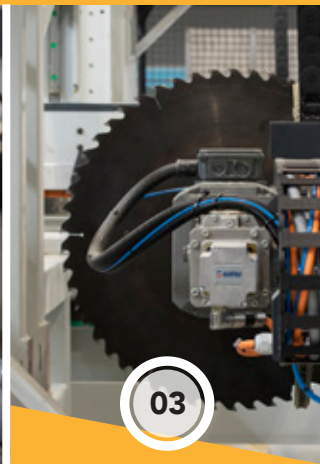
FOR DIMENSIONAL 2X LUMBER
PROCESSING OF ROOF TRUSS
COMPONENTS



01
THRU-FEED CHAINS FOR
2X WITH "DOGS"



02
SAW BLADE ANGLES
UP TO +87° / - 60°



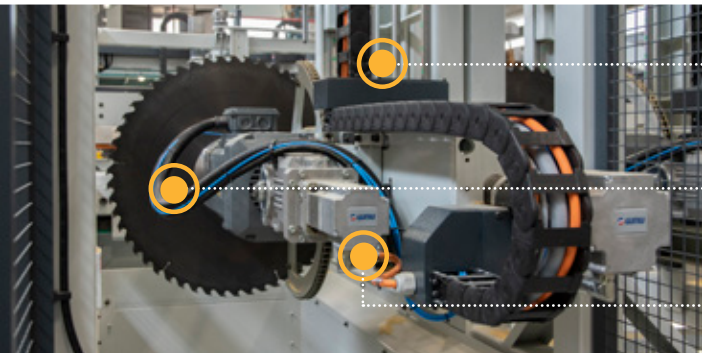
03
BRUSHLESS SERVO-MOTORS
FOR BLADE POSITIONING



04
PERIMETER FENCE FOR
EACH SAW BLADE UNIT



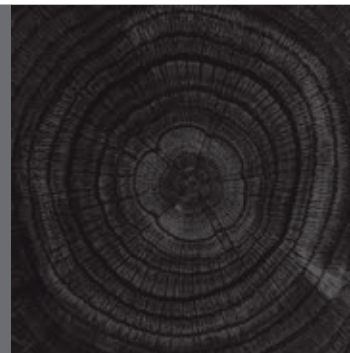
05
MAX. BLADE DIAMETER
29.5" (750 MM) Ø



linear guides for blade
positioning

cable track management
for quick change-overs

(2) servo-motors per saw
blade unit



TCS SERIES
MULTI-BLADE COMPONENT SAW
FOR PROCESSING DIMENSIONAL 2X
LUMBER ROOF TRUSS COMPONENTS

- angled or vertical cutting of dimensional 2X
- manual or automatic 2X loading and manual unloading of cut 2X
- robust, welded and stabilized tubular structure, composed of:
 - base for/with right and left vertical uprights, which are the two (2) cutting zones
 - belt waste/chip evacuation system
- both right and left uprights are movable on linear guides
- positioning of vertical uprights within each cutting zones, proper measurements – based on the length of the 2X – and saw blade angles by brushless servo-motors, controlled by NC (numeric control)
- blade angles from 0° (blade in vertical position) up to +87° and -60°
- both right and left uprights support saw blade motor units, thru-feed chains and top/upper pressure with 2X hold-down system
- thru-feed chains for 2X with "dogs" on center up to 350 mm (13.75")
- chain speed variable (by NC's touchscreen HMI) from 5 – 20 m/min. (16.4 – 65.6 fpm)
- RH lateral reference guide – fixed – located at the machine's entrance
- manual or electronic positioning of reference fence are optional
- machine supplied with device to permit horizontal (vs. standard vertical) processing of 2X
- motorized top/upper pressure, placed above thru-feed chains, for holding the 2X during cutting
- vertical electronic positioning of top/upper pressure by brushless servo-motors, controlled by NC (numeric control), based on the thickness of the 2X
- (5) 13 kW saw blade motor units; up to 2000 RPM by inverter
 - a 6th blade for TCS available upon request
- max. blade diameter 750 mm Ø
- electrical panel separate from the machine, located at the machine entrance
- electrical panel with conditioner unit to ensure proper air temperature
- 15" control touchscreen HMI, mounted on the electrical cabinet. A support can be given as an option.
- TCS system software for/with:
 - management of (24) brushless axis
 - management of work lists in manual-semi-automatic or automatic modes
 - piece counting system (linear dimension processed)
- "Tele-Assist" for remote technical support/assistance to the Customer's system
- printing identification of components not included in this supply
- perimeter fencing where applicable
- electrics @ 480 volts, 3-phase, 60 cycles

Images are for reference only. Machine's actual features based upon proposal configuration only.



Essetre North America | 6801-C Northpark Blvd. - Charlotte, NC 28216 | Tel: 704 817 8734

essetre.com